

LEE ENGINEERING

Product Catalog

ALUMINUM

**Lattice Connector**

Aluminum lattice connector
Accepts 1/2" Rod | 1/4" Set Screw
Product number: L2A-1

**Quick Action Connector**

Aluminum connector with Tee handle
Accepts 1/2" Rod
Product number: L4A-1

**12 Aluminum Lattice Connectors**

12 Lattice Connectors
Accepts 1/2" Rod | 1/4" Set Screw
Includes Hex Key
Product number: L1A-3

**Aluminum Rod Coupler**

Rod Coupler
Accepts 1/2" Rod
Includes Stainless Steel Tee Handles
Product number: RC50020-AL

STAINLESS STEEL

**Open Stainless Steel Connector**

Open S type connector
Accepts 1/2" Rod | 1/4" Set Screw
Product number: SL2A-1

**Closed Stainless Steel Connector**

Closed connector
Accepts 1/2" Rod | 1/4" Set Screw
Product number: SL2A-1C

**Stainless Steel Rod Coupler**

Rod Coupler
Accepts 1/2" Rod
Includes Stainless Steel Tee Handles
Product number: RC50020-SS

**Tee Handle Assembly**

Stainless Steel Assembly
*Exclusive Stainless Steel Tee Handle
For Quick Adjustments*
Product number: L5A-1

PLASTIC

**Open Plastic Connector**

Open type connector
Nylon hex head bolt
Accepts 1/2" Rod | 1/4" Set Screw
Product number: PL2A-1

**Closed Plastic Connector**

Closed connector
Nylon hex head bolt
Accepts 1/2" Rod | 1/4" Set Screw
Product number: PL2A-1C

ALUMINUM



Unfinished Zinc Vertical Base Plate

Lab foot frame for 1/2" Rods
Accepts 1/2" Rods | 1/4" Set Screw
#10 Mounting Screws Not Included
Product number: L8A-1R



Zinc Vertical Base Plate

Lab frame foot for 1/2" Rods
Accepts 1/2" Rods | 1/4" Set Screw
#10 Mounting Screws Not Included
Product number: L8A-1



Allen Wrench - Hex Key

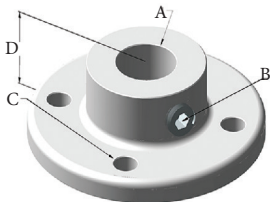
Hex L-Key - 0.32MM (1/8")
Product number: 81V



Zinc Swivel Base Plate

Allows 1/2" Rods angling of 45°
Accepts 1/2" Rods | 1/4" Set Screw
#10 Mounting Screws Not Included
Product number: L10A-1

STAINLESS STEEL



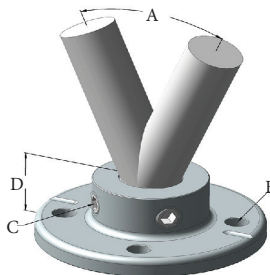
Vertical Base Plate

A: Allows 1/2" Rods
B: Locks in place with 2 set screws
C: Four .201 holes
D: .625" high



Stainless Steel Vertical Base Plate

Lab frame foot for 1/2" Rods
Accepts 1/2" Rods | 1/4" Set Screw
#10 Mounting Screws Not Included
Product number: SL8A-1



Swivel Base Plate

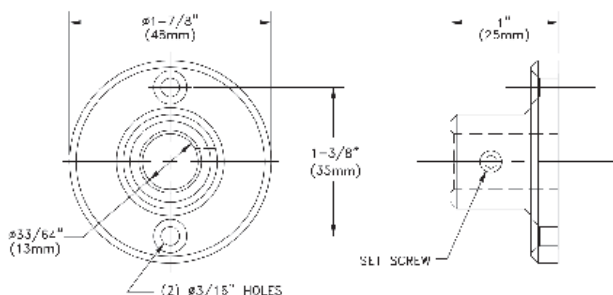
A: Allows 1/2" Rods angling of 45°
B: Four .201 holes
C: Locks in place with 2 set screws
D: .625" high



Stainless Steel Swivel Base Plate

Allows 1/2" Rods angling of 45°
Accepts 1/2" Rods | 1/4" Set Screw
#10 Mounting Screws Not Included
Product number: SL10A-1

PLASTIC



Plastic Vertical Base Plate

Accepts 1/2" Rod | 1/4" Set Screw
#10 Mounting Screws Not Included
Product number: PL8A-1

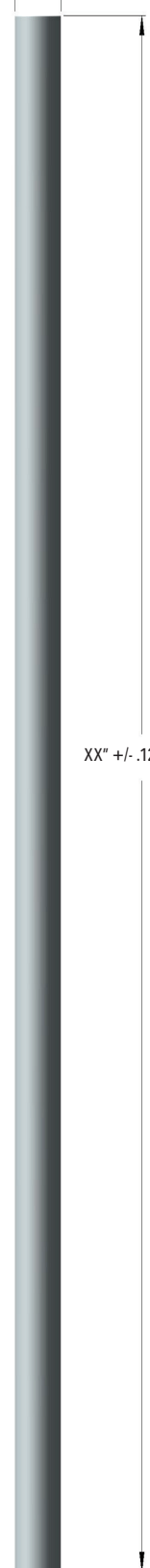
ALUMINUM



Aluminum Lab Frame Rod - Custom Lengths Available

Product #	Description	Length
L12R-4A	Aluminum lab frame lattice rod, 4" x 1/2" long	4"
L12R-12A	Aluminum lab frame lattice rod, 12" x 1/2" long	12"
L12R-24A	Aluminum lab frame lattice rod, 24" x 1/2" long	24"
L12R-36A	Aluminum lab frame lattice rod, 36" x 1/2" long	36"
L12R-48A	Aluminum lab frame lattice rod, 48" x 1/2" long	48"
L12R-60A	Aluminum lab frame lattice rod, 60" x 1/2" long	60"
L12R-72A	Aluminum lab frame lattice rod, 72" x 1/2" long	72"
L12R-84A	Aluminum lab frame lattice rod, 84" x 1/2" long	84"
L12R-96A	Aluminum lab frame lattice rod, 96" x 1/2" long	96"

.500 +/- .001



XX" +/- .125

STAINLESS STEEL



Stainless Steel Lab Frame Rod - Custom Lengths Available

Product #	Description	Length
L12R-4S	Stainless Steel lab frame lattice rod, 4" x 1/2" long	4"
L12R-12S	Stainless Steel lab frame lattice rod, 12" x 1/2" long	12"
L12R-24S	Stainless Steel lab frame lattice rod, 24" x 1/2" long	24"
L12R-36S	Stainless Steel lab frame lattice rod, 36" x 1/2" long	36"
L12R-48S	Stainless Steel lab frame lattice rod, 48" x 1/2" long	48"
L12R-60S	Stainless Steel lab frame lattice rod, 60" x 1/2" long	60"
L12R-72S	Stainless Steel lab frame lattice rod, 72" x 1/2" long	72"
L12R-84S	Stainless Steel lab frame lattice rod, 84" x 1/2" long	84"
L12R-96S	Stainless Steel lab frame lattice rod, 96" x 1/2" long	96"

FIBERGLASS

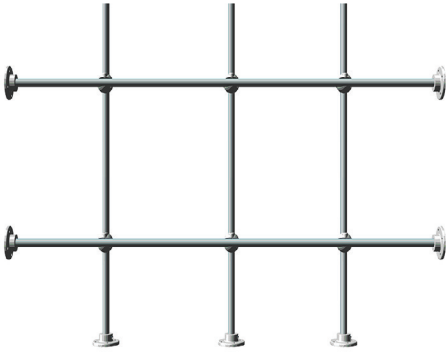


Fiberglass Lab Frame Rod - Custom Lengths Available

Product #	Description	Length
L12R-4F	Fiberglass lab frame lattice rod, 4" x 1/2" long	4"
L12R-12F	Fiberglass lab frame lattice rod, 12" x 1/2" long	12"
L12R-24F	Fiberglass lab frame lattice rod, 24" x 1/2" long	24"
L12R-36F	Fiberglass lab frame lattice rod, 36" x 1/2" long	36"
L12R-48F	Fiberglass lab frame lattice rod, 48" x 1/2" long	48"
L12R-60F	Fiberglass lab frame lattice rod, 60" x 1/2" long	60"
L12R-72F	Fiberglass lab frame lattice rod, 72" x 1/2" long	72"
L12R-84F	Fiberglass lab frame lattice rod, 84" x 1/2" long	84"

SIDE & BOTTOM LAB-FRAME KIT

Side & Bottom Lab-Frame Kit for Fume Hoods - Custom Sizes Available



4 Ft Kit Includes: 3- 36" Rods, 2- 38" Rods,
6- Connectors &
7- Base Plates

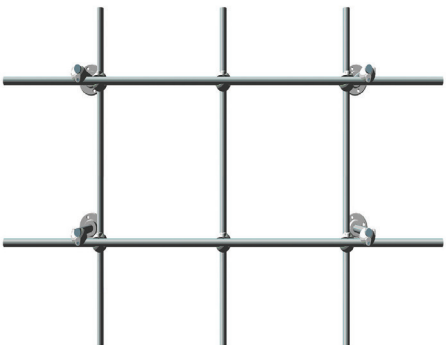
6 Ft Kit Includes: 5- 36" Rods, 2- 62" Rods,
10- Connectors &
9- Base Plates

8 Ft Kit Includes: 7- 36" Rods, 2- 86" Rods,
14- Connectors &
11- Base Plates

Material	Product #	Size	Dimintions
Aluminum	STBM-4A	4'	36" x 38"
Aluminum	STBM-6A	6'	36" x 62"
Aluminum	STBM-7A	8'	36" x 86"
Stainless Steel	STBM-4S	4'	36" x 38"
Stainless Steel	STBM-6S	6'	36" x 62"
Stainless Steel	STBM-7S	8'	36" x 86"
Fiberglass	STBM-4F	4'	36" x 38"
Fiberglass	STBM-6F	6'	36" x 62"
Fiberglass	STBM-7F	8'	36" x 86"

BACK MOUNT LAB-FRAME KIT

Back Mount Lab-Frame Kit for Fume Hoods - Custom Sizes Available



4 Ft Kit Includes: 3- 36" Rods, 2- 38" Rods,
4- 4" Rods, 10- Connectors &
4- Base plates

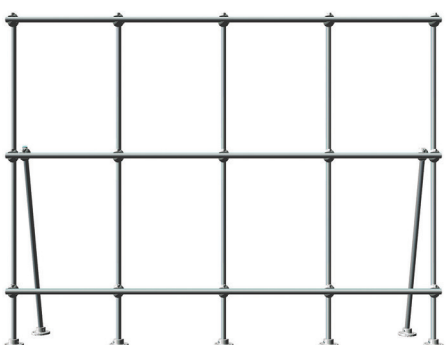
6 Ft Kit Includes: 5- 36" Rods, 2- 62" Rods,
6- 4" Rods, 16- Connectors &
6- Base Plates

8 Ft Kit Includes: 7- 36" Rods, 2- 86" Rods,
8- 4" Rods, 22- Connectors &
8- Base Plates

Material	Product #	Size	Dimintions
Aluminum	BM-4A	4'	36"x38"x4"
Aluminum	BM-6A	6'	36"x62"x4"
Aluminum	BM-7A	8'	36"x86"x4"
Stainless Steel	BM-4S	4'	36"x38"x4"
Stainless Steel	BM-6S	6'	36"x62"x4"
Stainless Steel	BM-7S	8'	36"x86"x4"
Fiberglass	BM-4F	4'	36"x38"x4"
Fiberglass	BM-6F	6'	36"x62"x4"
Fiberglass	BM-7F	8'	36"x86"x4"

TABLE TOP LAB-FRAME KIT

Table Top Lab-Frame Kit for Fume Hoods - Custom Sizes Available



4 Ft Kit Includes: 5- 36" Rods, 3- 38" Rods,
2- 24" Rods, 17- Connectors,
5- Base Plates & 2- Swivel Plates

6 Ft Kit Includes: 7- 36" Rods, 3- 62" Rods,
4- 24" Rods, 25- Connectors,
7- Base Plates & 4- Swivel Plates

8 Ft Kit Includes: 9- 36" Rods, 3- 86" Rods,
5- 24" Rods, 32- Connectors,
9- Base Plates & 5- Swivel Plates

Material	Product #	Size	Dimintions
Aluminum	TTM-4A	4'	36"x38"x11"
Aluminum	TTM-6A	6'	36"x62"x11"
Aluminum	TTM-7A	8'	36"x86"x11"
Stainless Steel	TTM-4S	4'	36"x38"x11"
Stainless Steel	TTM-6S	6'	36"x62"x11"
Stainless Steel	TTM-7S	8'	36"x86"x11"
Fiberglass	TTM-4F	4'	36"x38"x11"
Fiberglass	TTM-6F	6'	36"x62"x11"
Fiberglass	TTM-7F	8'	36"x86"x11"



Glossary

Clamps

Clamps secure various lab apparatus, such as jointed glassware, columns, flasks, and tubes.

Connectors

Connectors allow the lab frame to be customized in just about any configuration you need.

Open Type Connector

The open throat ball and S-type connectors allow easy shifting and removal of rods, reducing setup time. The smooth, rounded surface makes the lattice connector compact and easy-to-clean.

Closed Type Connector

Closed connectors provide connection of substantial rods and rod-mounted equipment. The tapered inlet ensures smooth, accurate rod alignment.

Coupler

Couplers are used to extend lattice rods. Tapered inlets ensure smooth, accurate rod alignment.

Lab Frame Rods

Rods are the skeletons of your lab lattice, most often used as the base for suspending other components. Offered in various lengths and diameters, these versatile lab frame rods make setting up your lab simple.

Supports and bases

Lab frame supports and bases give your lab frame a solid base to stand on. These can be free-standing with a fixed perpendicular base or secured to your lab bench with a locking single-plane base plate.

About Us

For over 50 years, Lee Engineering has manufactured laboratory lattice components constructed for durability and versatility. We specialize in serving fume hood and casework manufacturers, schools, universities and commercial laboratories alike. Our products are entirely made in the USA.

Most products are available to ship same or next day.

Contact us today to discover the customer service, quality and value that back our lattice components. Bulk pricing and credit terms are available.

Lee Engineering, LLC

1000 W Royal Lee Drive

Palmyra WI, 53156

1-844-781-5080

lab.engineeringbylee.com

Founded in 1926 by inventor and nutritionist Dr. Royal Lee, Lee Engineering designs and manufactures laboratory lattice systems, motorized household appliances and momentary foot switches.

Our lattice systems were originally designed to support nutritional research and have evolved to support a broad base of applications.

