



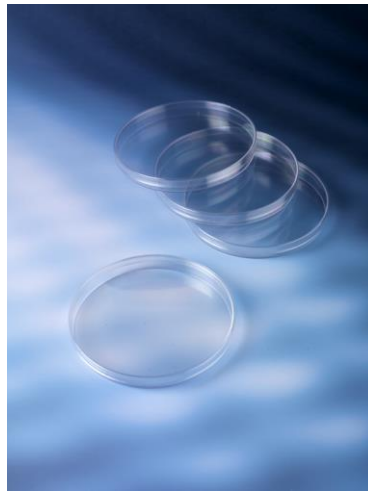
FINDLAY

SCIENTIFIC

PETRI DISH

60MM | 100MM | 150MM

Used to culture cells on solid media for microbiological studies.
Manufactured using polystyrene.



| Product Code | Diameter (mm) | Height (mm) | Number of Vents | Sterility | Inner Pack Quantity |
|--------------|---------------|-------------|-----------------|-----------|---------------------|
| PD-141 | 140 | / | / | ETO | 5 |
| PD-621 | 60 | / | 3 | ETO | 20 |
| PD-901 | 90 | 14.2 | / | ETO | 20 |
| PD-951 | 90 | 15.8 | / | ETO | 20 |

- Manufactured either aseptically or ETO sterilized under ISO 7 clean room conditions
- Crystal clear to ensure premium optical quality
- Optimal planarity
- Requires less media than others
- Triple Vented
- CE marked

CONICAL TUBES

15ML | 50ML | 50ML SELF-STANDING

Used in centrifugation, sample storage, and molecular biology.
 Tube manufactured using Polypropylene.
 Cap manufactured using Polypropylene.

- Leak-proof
- Conical bottom suitable for centrifugation tests
- Accurate and easy to read graduations
- Superior clarity
- Centrifugation can reach up to 11000 g
- CE marked



| Product Code | Description | Cap Color | Sterility | Supplies on Rack | Inner Pack Quantity | Pieces per Box |
|--------------|-------------|-----------|-----------|------------------|---------------------|----------------|
| CTS-155 | Screw Cap | Red | ETO | No | 50 | 1000 |
| CTS-510 | Screw Cap | Red | ETO | No | 100 | 500 |
| CTS-610 | Screw Cap | Red | ETO | No | 100 | 500 |

TEST TUBES

5ML | 10ML

Used in dilutions, bacterial cultures, sample storage, centrifugation and precipitates, chromatography fraction collection and other applications.

Tube manufactured using Polystyrene.

Cap manufactured using low density Polyethylene.

- Precision molded
- Total transparency to ensure premium optical quality
- CE marked

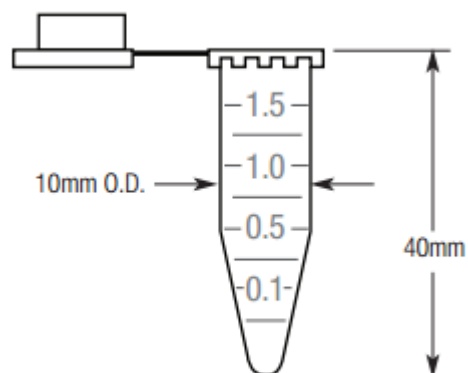


| Product Code | Cap Size | Cap Color | Inner Pack Quantity | Pieces per Box |
|--------------|----------|-----------|---------------------|----------------|
| TT-100 | / | / | 500 | 3000 |
| TT-500 | / | / | 500 | 6000 |

MICRO CENTRIFUGE TUBES

Graduated micro-centrifuge tube, 1000/pack. 1.5mL capacity. Attached snap cap. Molded graduations. These polypropylene tubes are resistant to most chemical reagents and can be autoclaved at 121°C.

*Available in clear, blue, pink, yellow and amber.



Material: Polypropylene (PP)
 Autoclavable: Yes. 121°C for 20 minutes
 Temperature range: -10°C to +50°C
 Spin rate: 16.400 rpm or 25.00x g

| Product Code | Description | Pieces per Box |
|--------------|---|----------------|
| 111558 | Microcentrifuge Tube, 1.5mL, PP, Attached Snap Cap, Graduated (Assorted Colors Available) | 1000 |

*Other sizes available.

SAFETY BOXES

3L

Used for the safe disposal of contaminated products and sharps. Manufactured using polypropylene.

- Designed and labelled in accordance to the UN3291 Standard
- Shock-proof container, resistant to solvents and perforation
- Easy to handle
- Permanent and damage-proof closure
- Puncture-resistant
- Stable on flat surfaces
- Leak-proof upon locking the lid
- Cover provided with a built-in flat opening having a temporary and permanent closing system



| Product Code | Total Capacity (L) | Useful Capacity (L) | Maximum Load (kg) | Pieces/Box |
|--------------|--------------------|---------------------|-------------------|------------|
| SH-030 | 3 | 2.4 | 2 | 36 |

HANGERS

Used for wall or trolley mounting of sharps containers



- Suitable for hanging 1.8L, 3L, 5L and 10L sharps containers

Product Code
SH-001

MICROPIPETTE TIPS

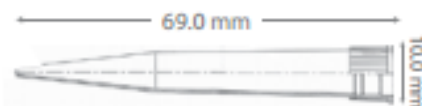
5-200 μL | 100-1000 μL

Used for the transport and sampling of a measured volume of liquid.
Manufactured using polypropylene.

- Precision molded tips
- DNase RNase free
- Packaged in sealed economical bulk bags or available in racks
- CE marked



| Product Code | Volume Range (uL) | Color | Inner Pack Quantity | Pieces per Box |
|--------------|-------------------|--------|---------------------|----------------|
| MT-102 | 5-200 | Yellow | 1000 | 30000 |
| MT-101 | 100-1000 | Blue | 1000 | 16000 |



MICROPIPETETTE TIPS IN RACK

5-200 μL | 100-1000 μL

Used for the transport and sampling of a measured volume of liquid

Tips manufactured using polypropylene

Racks manufactured using polypropylene



- Precision molded tips
- ETO sterilized
- Packaged in sealed economical bulk bags or available in racks
- Tips are DNase RNase free
- CE marked



| Product Code | Volume Range (μL) | Color | Inner Pack Quantity | Pieces per Box |
|--------------|--------------------------------|--------|---------------------|----------------|
| MT-202 | 5-200 | Yellow | 96 | 50 |
| MT-201 | 100-1000 | Blue | 96 | 30 |

INOCULATING LOOPS

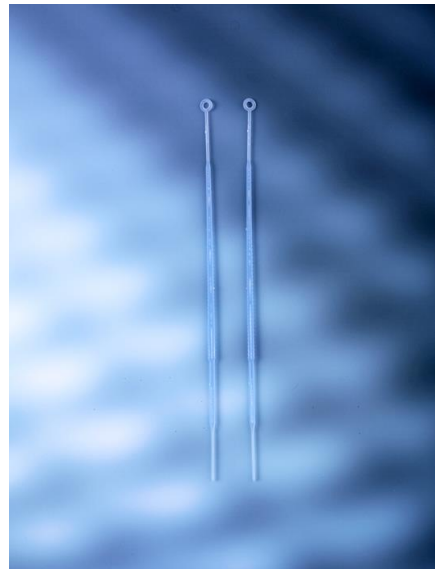
1 μ L | 10 μ L

Used for the transfer of micro-organisms to growth media/staining slides.
Manufactured using polypropylene.

- Made for single use
- Safer to use than metal loops due to the absence of the need for flaming
- CE marked
- Acid-resistant
- DNase RNase free

| Product Code | Capacity (uL) | Color | Sterility | Inner Pack Quantity | Pieces per Box |
|--------------|---------------|--------|-----------|---------------------|----------------|
| IL-014 | 1 | Yellow | ETO | 20 | 5000 |
| IL-012 | 1 | Yellow | ETO | 5 | 5000 |
| IL-011 | 1 | Yellow | ETO | 1 | 1250 |

| Product Code | Capacity (uL) | Color | Sterility | Inner Pack Quantity | Pieces per Box |
|--------------|---------------|-------|-----------|---------------------|----------------|
| IL-104 | 10 | Blue | ETO | 20 | 5000 |
| IL-102 | 10 | Blue | ETO | 5 | 5000 |
| IL-101 | 10 | Blue | ETO | 1 | 1250 |



SPECIMEN CONTAINER

120mL

Used to collect, transport, and store a wide variety of samples.
 Container manufactured using Polypropylene.
 Cap manufactured using high density Polyethylene.

- Chemically inert and resistant to common laboratory reagents at room temperature
- Leak-proof design
- Molded-in graduation up to 100 mL
- Maximum capacity is 120 mL
- Frosted area for easy writing
- CE marked



| Product Code | Assembled | Volume (mL) | Container Material | Cap Color | Sterility | Label | Spoon | Pieces per Box |
|--------------|-----------|-------------|--------------------|-----------|-----------|-------|-------|----------------|
| SCP-100 | No | 120 | PP | Red | Sterile A | No | No | 500 |
| SCP-101 | Yes | 120 | PP | Red | ETO | No | No | 250 |