



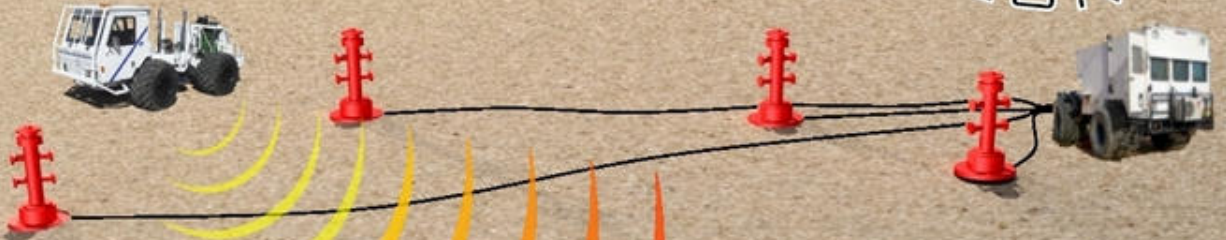
DOWNHOLE SEISMIC TOOLS

HIGH PRESSURE

HIGH TEMPERATURE



GEONET



GEOREC



GEOREC-A



PEREVAL



GEOREC-S

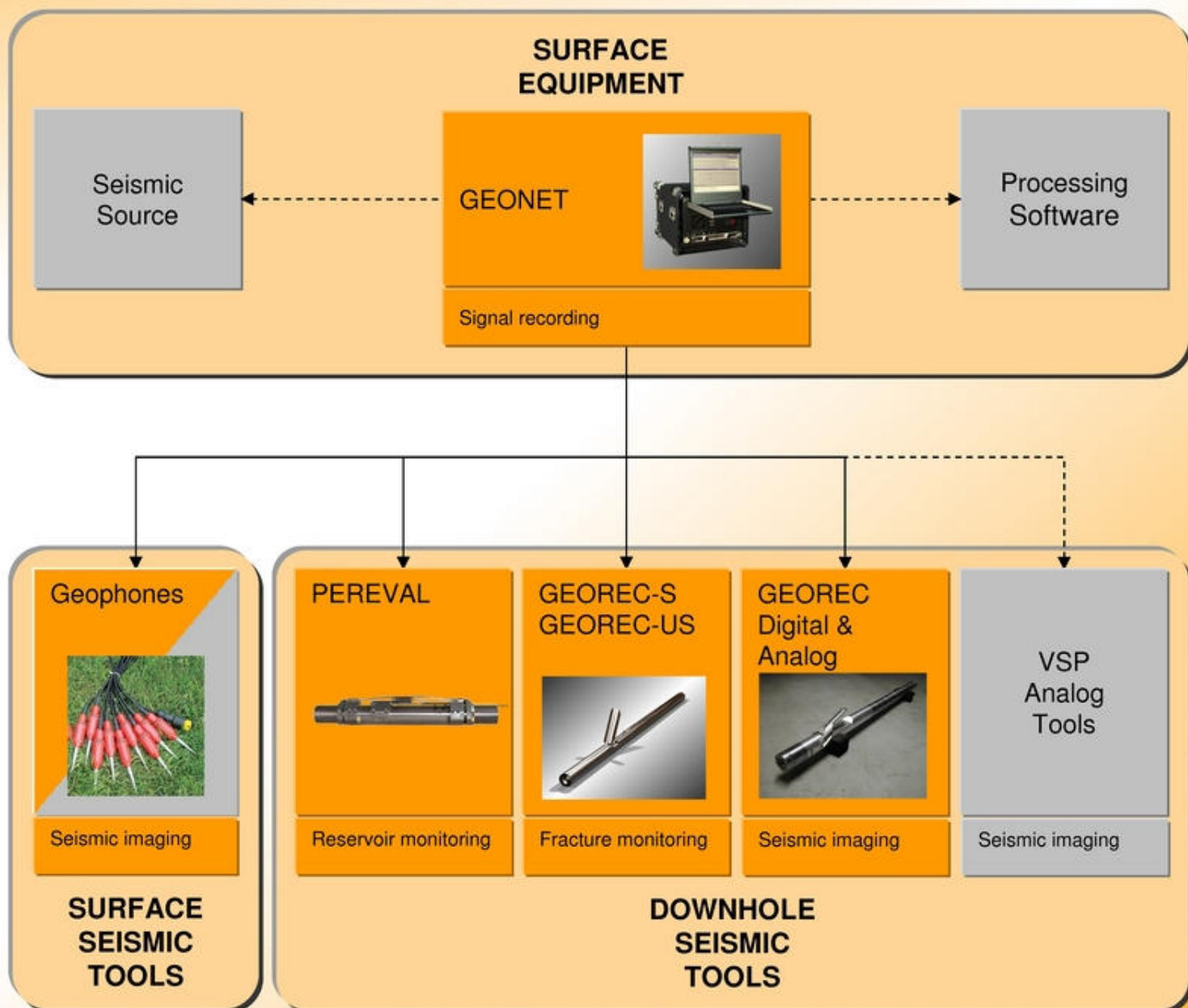


GEOREC-US

AN OPEN PLATFORM FOR SURFACE AND DOWNHOLE ACQUISITION

A multi-task acquisition network offering to work simultaneously with :

- ✔ 3D/4D downhole seismic tools in high pressure & high temperature conditions
- ✔ Fracture monitoring tools
- ✔ Permanent sensor tools



Vinci Technologies product

Other companies product : the platform is fully compatible with any commercialized seismic source, VSP analog tool and processing software

DESCRIPTION

GEONET is a common acquisition system for all Vinci Technologies seismic tools.

The system is able to acquire data from 10 wells simultaneously (in option).

GEONET includes :

- ✔ 2 power supply modules (for motors and tools)
- ✔ 1 industrial computer for control and acquisition
- ✔ Motor and level control software
- ✔ Data acquisition and storage software

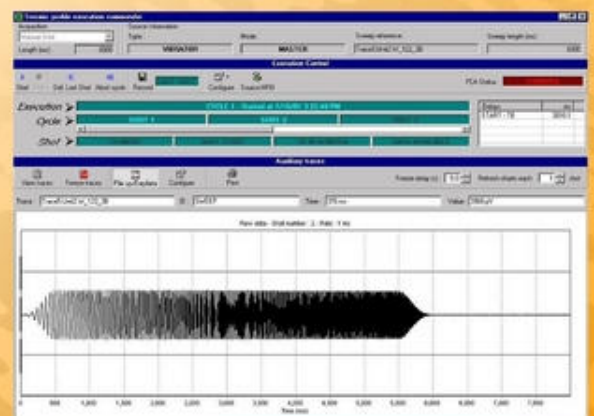


FEATURES

- ✔ Output format : SEG-D, SEG2, SEG-Y (other format on request)
- ✔ Performs data correlation and stack
- ✔ Compatible with all standard sources
- ✔ Flexible interface with shooting controller units
- ✔ Built in QC software

- ✔ Synchronization : better than 50µs
- ✔ Playback shots display
- ✔ Fully flexible thresholds settings applicable to any sensor in any level
- ✔ Thresholds adjustable to ambient noise level
- ✔ Integrated facilities tests : geophone, short pulse, noise

- ✔ Power supply requirement: 100/230 VAC, 47/63 Hz
- ✔ Operating temperature: 0-50 °C



A RANGE OF PRODUCTS FOR DOWHOLE SEISMIC ACQUISITION

Designation	Digital Tools			Analog Tool
	GEOREC	GEOREC-S	GEOREC-US	GEOREC-A
Temperature rating	180°C continuously (356°F)	180°C continuously (356°F)	130°C continuously (266°F)	220°C continuously (428°C)
Pressure rating	2,000 bar (30,000 psi)	1,500 bar (21,500 psi)	1,500 bar (21,500 psi)	1,500 bar (21,500 psi)
Max number of levels	48	48	24	2
OD tool	80 mm (3.15")	50 mm (2")	43 mm (1.69")	80 mm (3.15")
Length	1,400 mm (55")	1,200 mm (47")	1,200 mm (47")	1,050 mm (41")
Min ID well	3.75"	3"	2.25"	3.75"
Max ID well	16"	13"	13"	16"
Telemetry	Independent for each level			-
Power supply	Independent for each level			-
Max tool spacing	No limitation			70 m Between satellites
Cable equalization	Fully automatic			-
Rate telemetry	1,5 Mbit/s on 7000m cable 2,5 Mbit/s on request			-
Sampling rate	1/4; 1/2; 1; 2; 4 ms			-
Dynamic range	120 dB			-
Data transmission	24 bit			-
Sensor type	Omni 2400 15Hz	Omni 2400 15Hz VS9002 250Hz	Omni 2400 15Hz VS9002 250Hz	SM-45 15Hz HT
Gimbaled	On request	No	No	On request
Hepta cable	Yes	Yes	Yes	-
Coax cable	On request	On request	On request	-
Mono cable	On request	On request	On request	-

VINCI TECHNOLOGIES – Parc de l'Île - 27B rue du Port - 92022 NANTERRE cedex - France
 tel. +33 1 41 37 92 20 – fax +33 1 41 37 04 76 – e-mail vincinet@vinci-technologies.com
 Visit our website <http://www.vinci-technologies.com>